

IMPORTANT NOTICE

SECTIONS OF AUSTRALIAN ALPS WALKING TRACK CLOSED

Due to wide spread fire damage from the 'Black Saturday' bushfires, sections of the Australian Alps Walking Track and adjoining walking tracks are closed to public access due to the high level of risk.

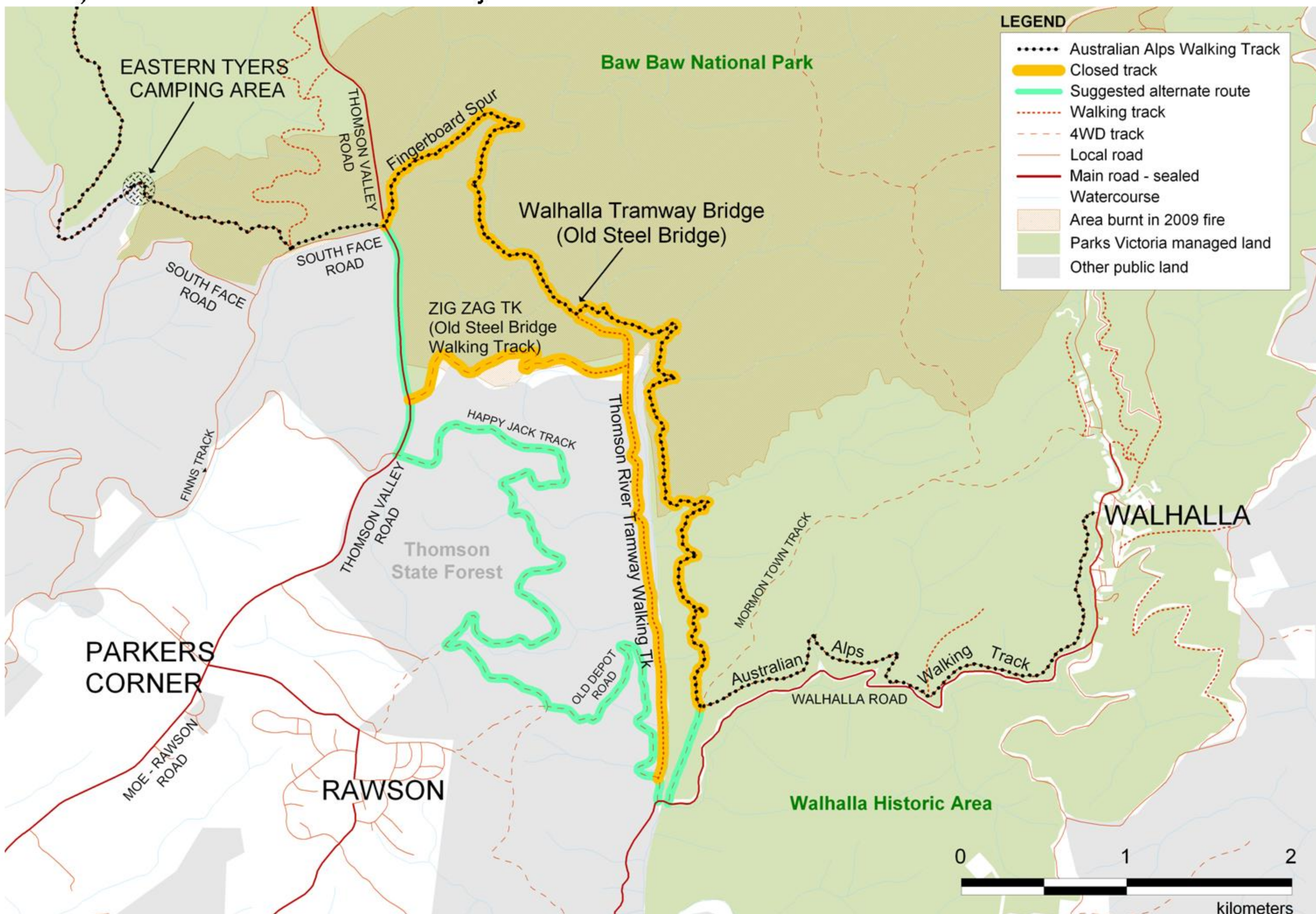
The closed sections are:

- Australian Alps Walking Track (Thomson Valley Road to Mormon Town Track – including Fingerboard Spur and the Walhalla Tramway Bridge).
- Zig Zag Track (Old Steel Bridge Walking Track) in Baw Baw National Park.
- Thomson River Tramway Walking Track (along the Thomson River west bank) in the Thomson State Forest.

Reason for closure include:

- Hazardous trees, limbs and fallen timber
- Damaged tracks and bridges
- Unstable soils

It is anticipated that tracks will be closed until January 2010. Alternative routes (as indicated on the map below) follow roads and tracks used by vehicular traffic so remain alert at all times.



For further information call: Parks Victoria Information Centre on 13 19 63 or Dept of Sustainability and Environment on 13 61 86